

INRAE

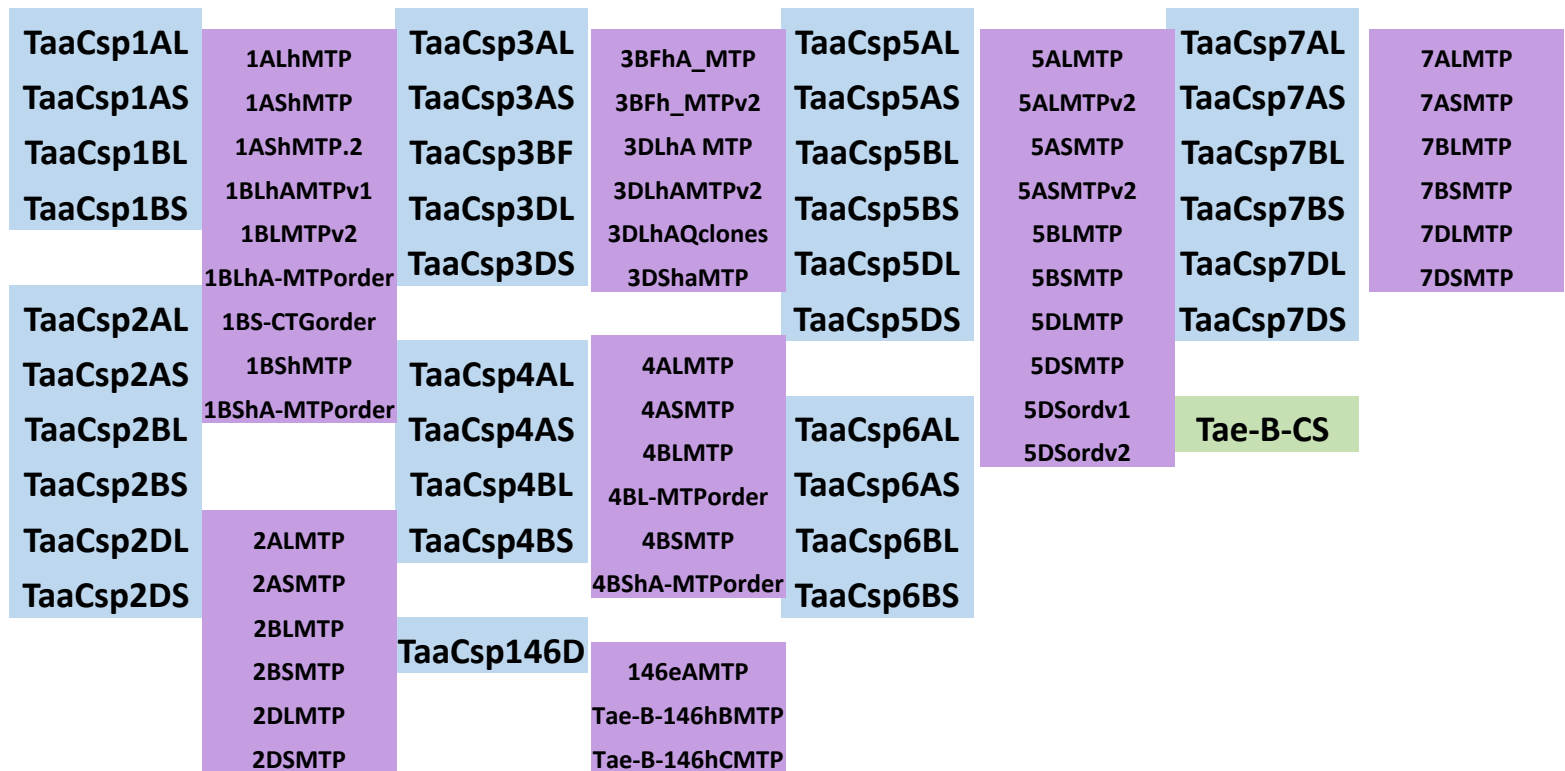


➤ CNRGV
BAC libraries and resources



➤ Repository center for wheat chinese sprinf BAC libraries

- BAC libraries produced at Institute of Experimental Botany / JIC-INRAE
- Distributed for building physical maps (finger printing + whole genome profiling)
- Organization of Minimum tilling path



➤ Repository center for wheat chinese sprinf BAC libraries

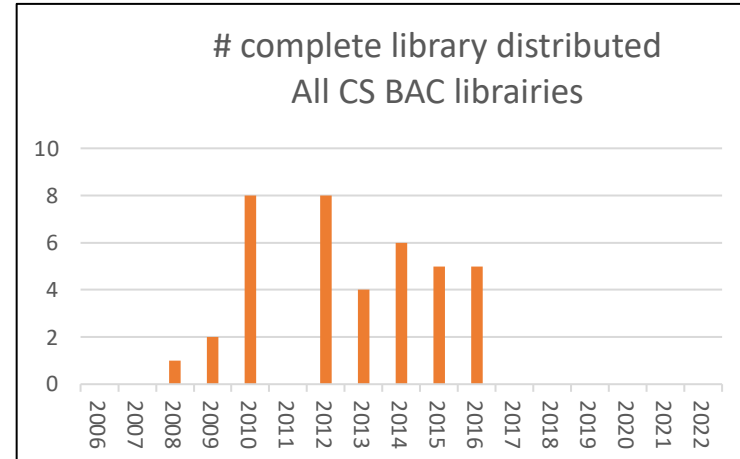
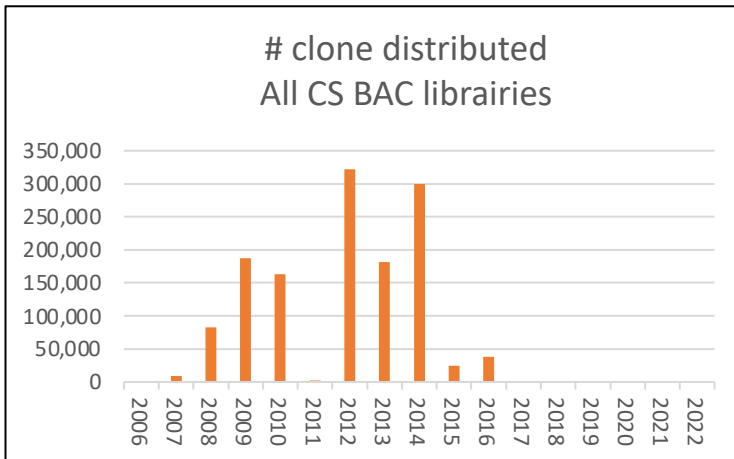
Wheat CS libraries IWGSC

92 libraries

4 366 848 clones

11 372 plates / 9 freezer -80C

➔ 1 308 679 clones distributed from 42 libraries



➔ No distribution since ref seq release

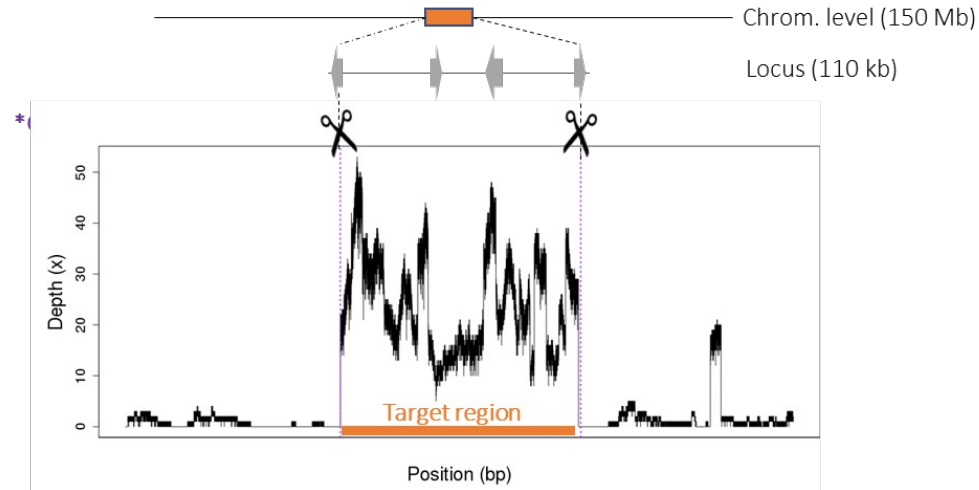
Interest for the IWGSC community ?

DNA for transformation

Validation of complex loci

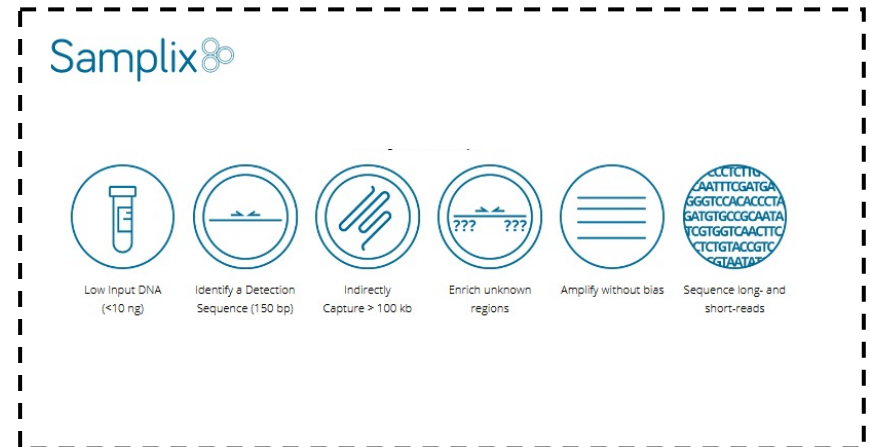
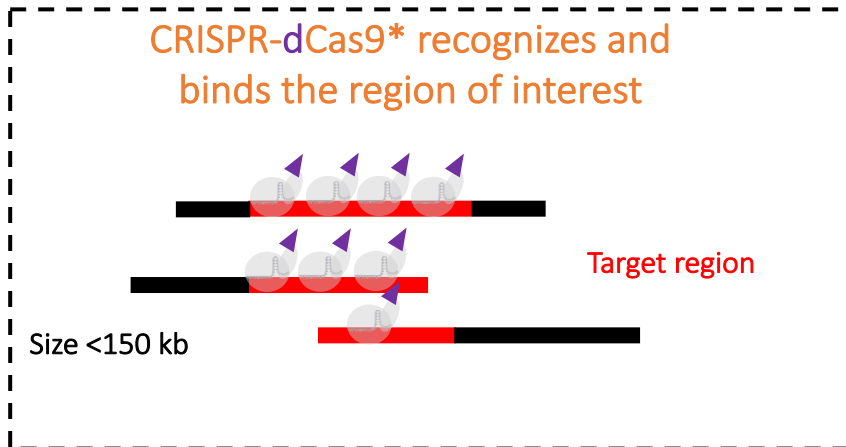
???

➤ Alternative strategies for scanning for diversity of large loci



PullCATCH Approach

Xdrop Approach



Thanks for your attention and comments



<https://cnrgv.toulouse.inrae.fr/en>