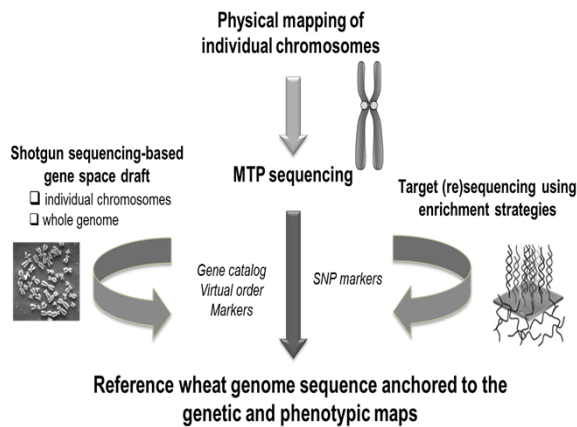


International Wheat Genome Sequencing Consortium

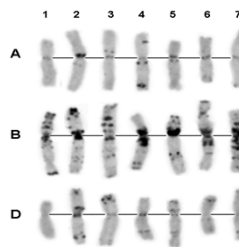
<http://www.wheatgenome.org>



In 2005, the International Wheat Genome Sequencing Consortium (IWGSC) was created to facilitate and coordinate an international initiative to accelerate wheat improvement by delivering to breeders and scientists a high quality gold standard reference genome sequence of bread wheat that is anchored to the genetic maps. IWGSC projects related specifically to the hexaploid, bread wheat genome, cv. Chinese Spring, fall within two broad categories: physical mapping (i.e., construction of chromosome based physical maps anchored to genetic maps) and sequencing. The IWGSC also has coordinated the completion of the physical map of the D-genome progenitor, *Ae. tauschii*.



Chromosome-specific BAC libraries



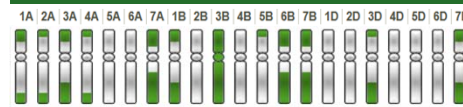
2, 713,728 BAC Clones

✓ All BAC libraries completed: 37 libraries for 4 chromosomes and 34 chromosome arms

Bread Wheat Physical Mapping



Bread Wheat MTP Sequencing



See special issue, *Science* 345

Bread Wheat Survey Sequencing



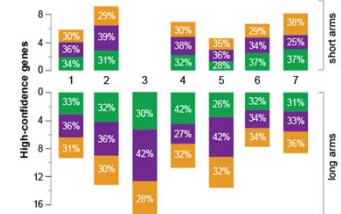
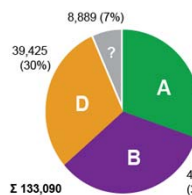
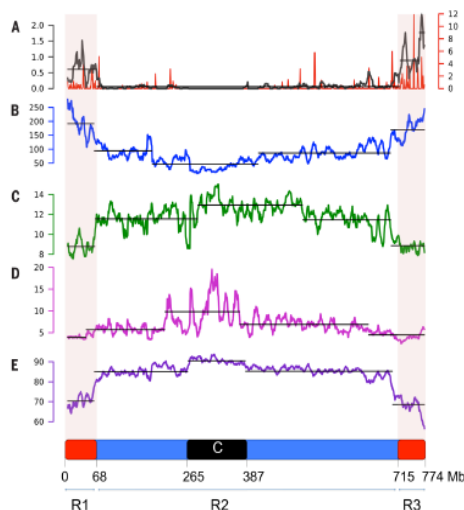
✓ First chromosome based draft sequence of the bread wheat genome

✦ Total length 10.2 Gb

✦ 128Mb (1DS) – 639Mb (3B) assembled sequence per chromosome

✦ N50 contig length after repeat masking = 6.1kb (1.7kb-8.9kb)

✓ First reference sequence of chromosome 3B reveals structural and functional partitioning



Data available at the IWGSC repository: <http://wheat-urgi.versailles.inra.fr/Seq-Repository/>



Thanks to the IWGSC sponsors